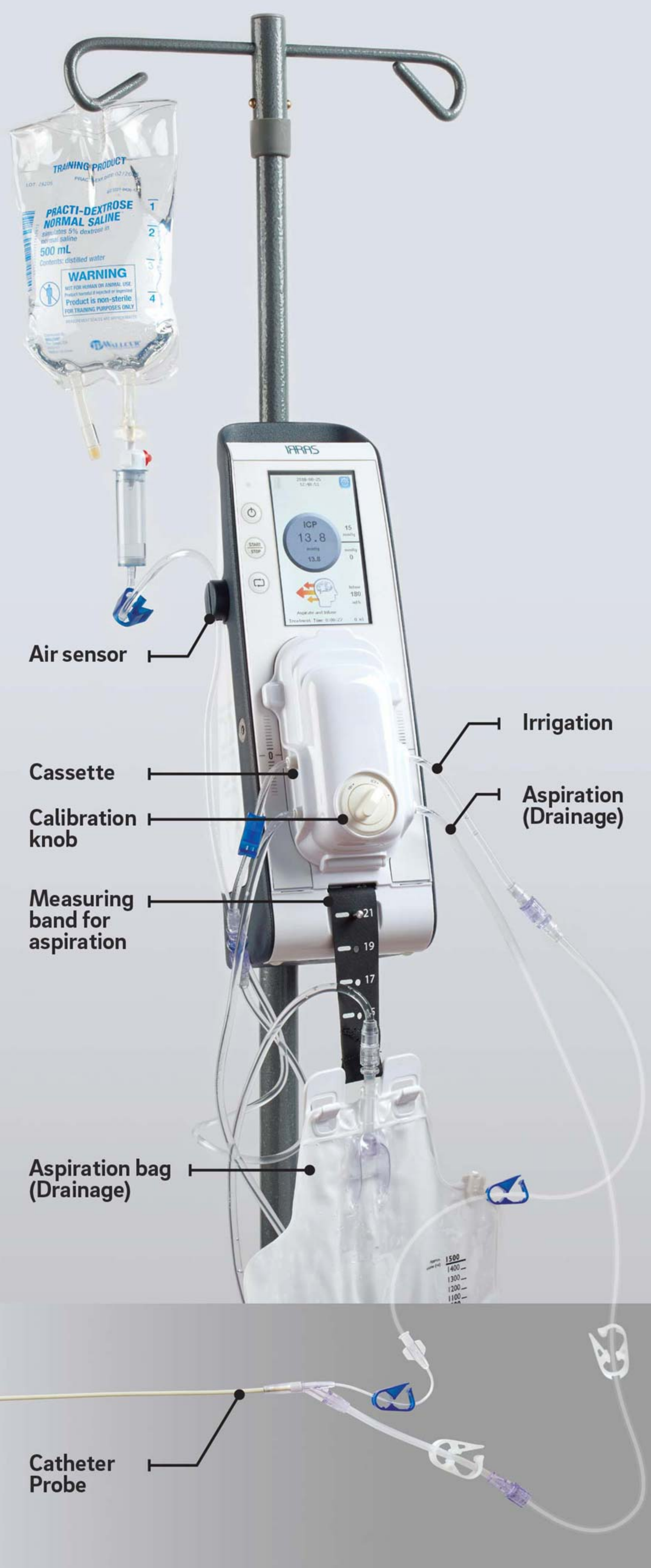




Prep

Prime

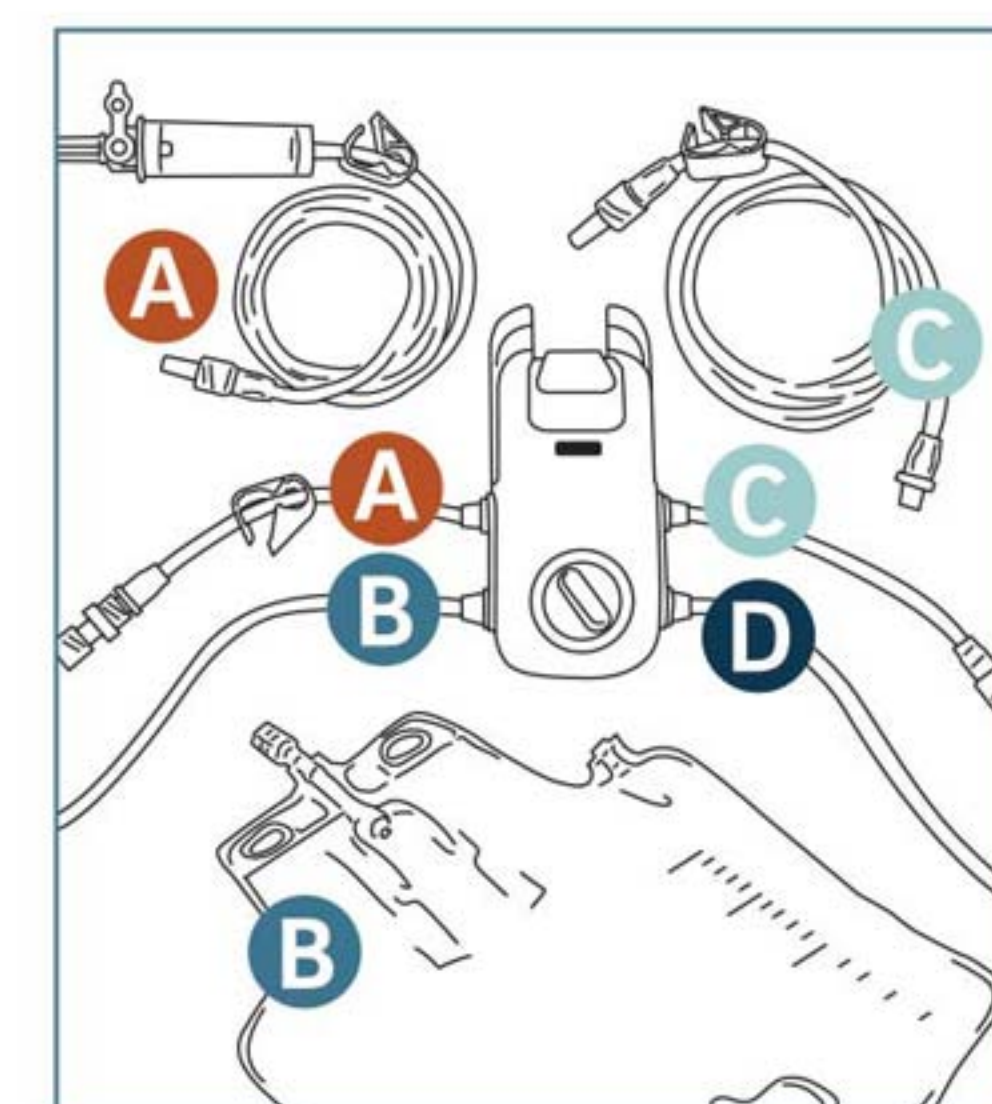
Set



Position IRRAflow on the IV pole and level to tragus.

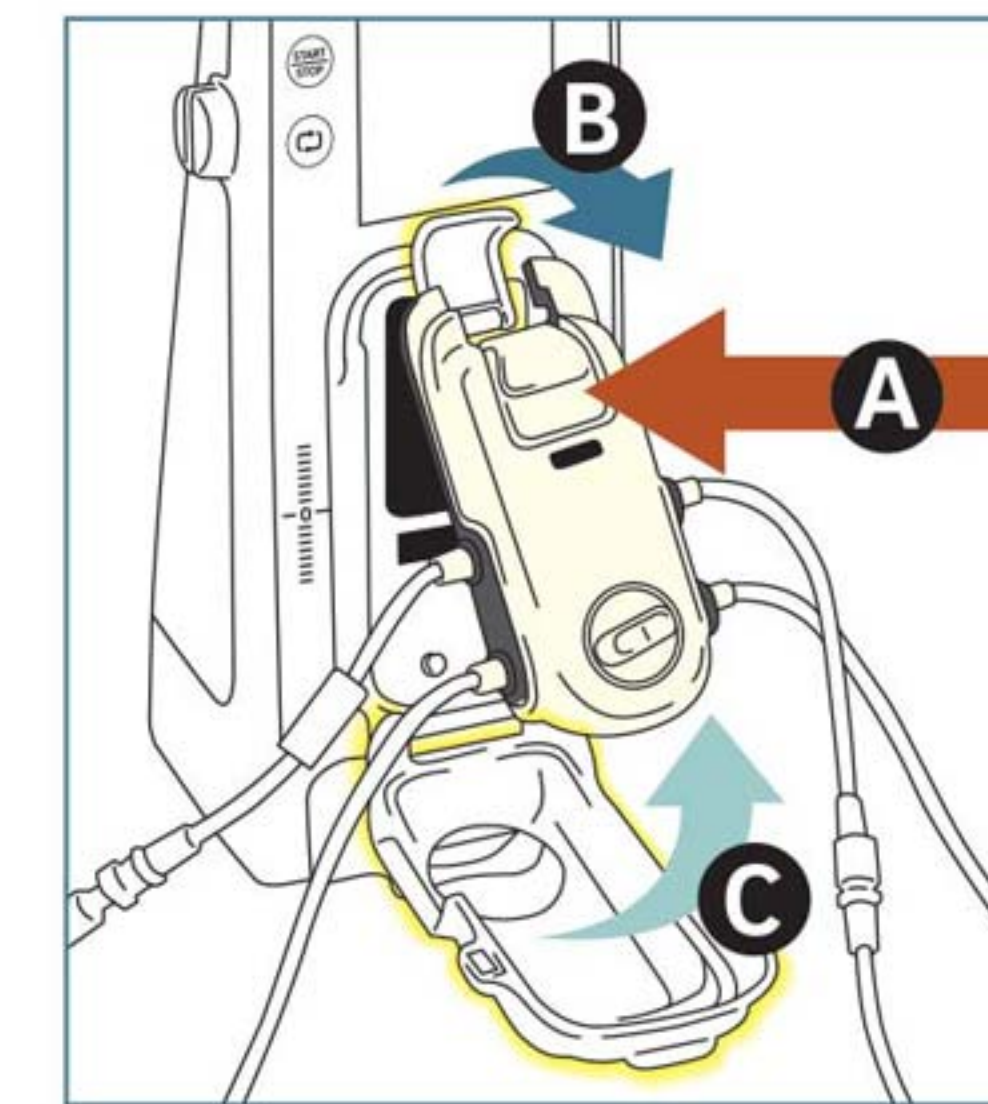


Turn machine on by pressing the power button.



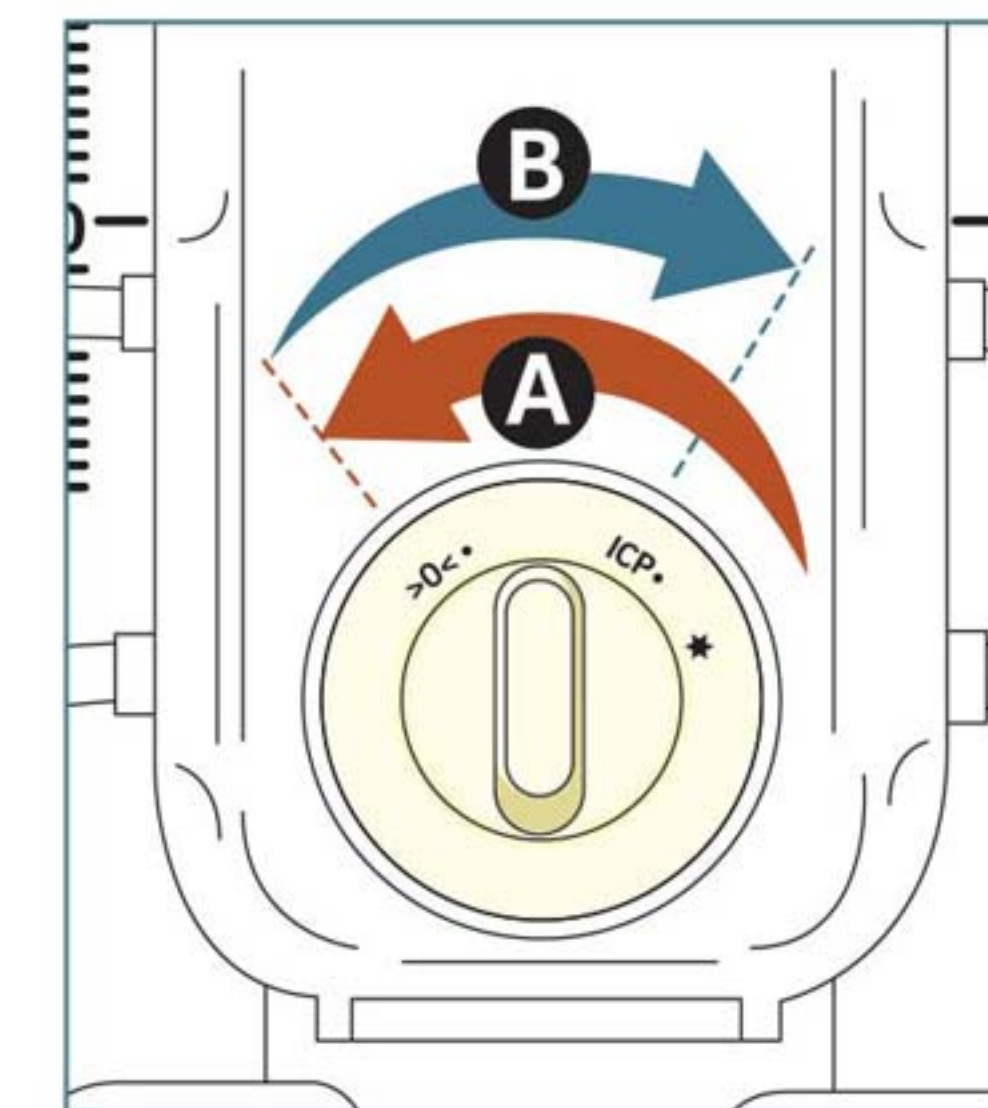
Prep Tube Set in sterile fashion.

1. A to A
2. B to B
3. C to C
4. Connect C to D prior to priming



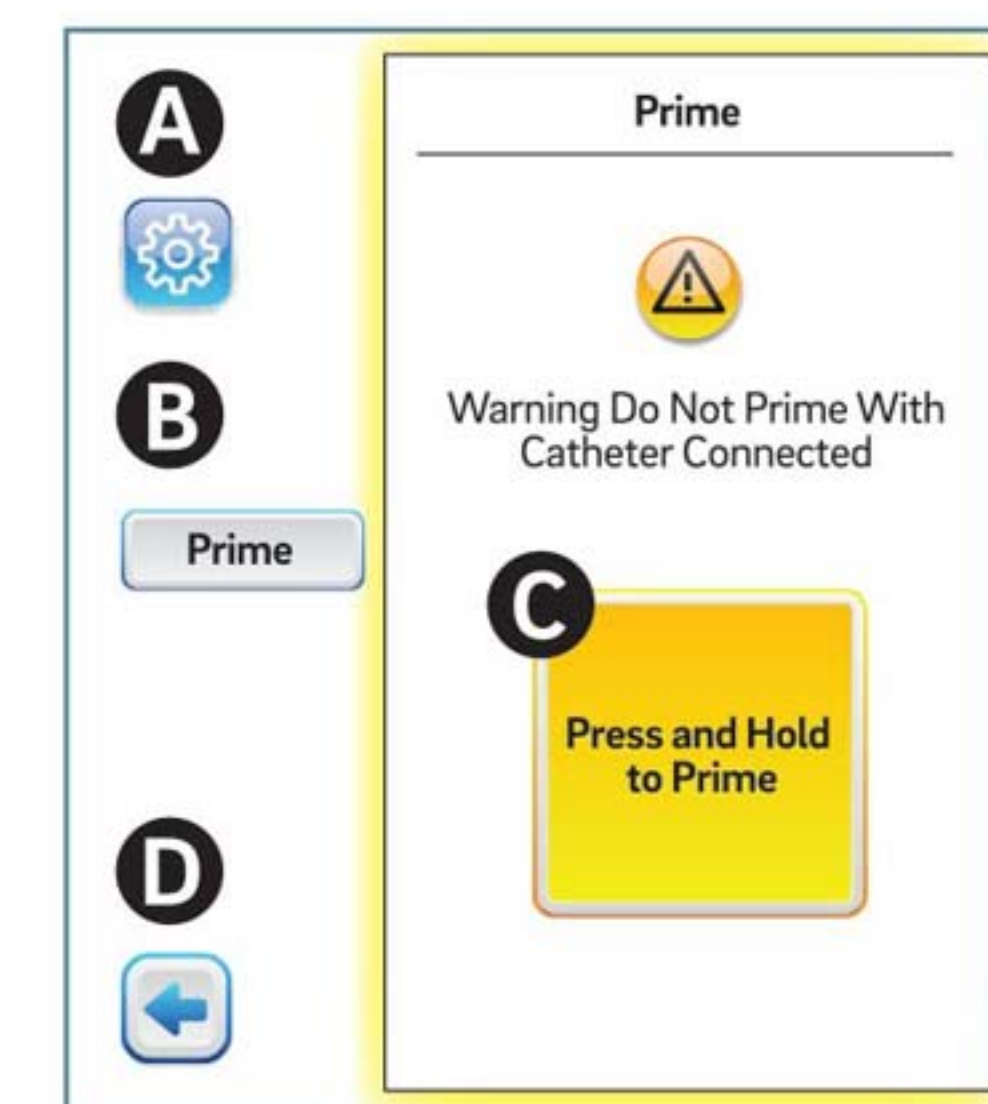
Attach the Cassette and open all tube clamps.

- A. Place Cassette into machine
- B. Close Cassette lever
- C. Close Cassette door



Calibrate the Cassette.

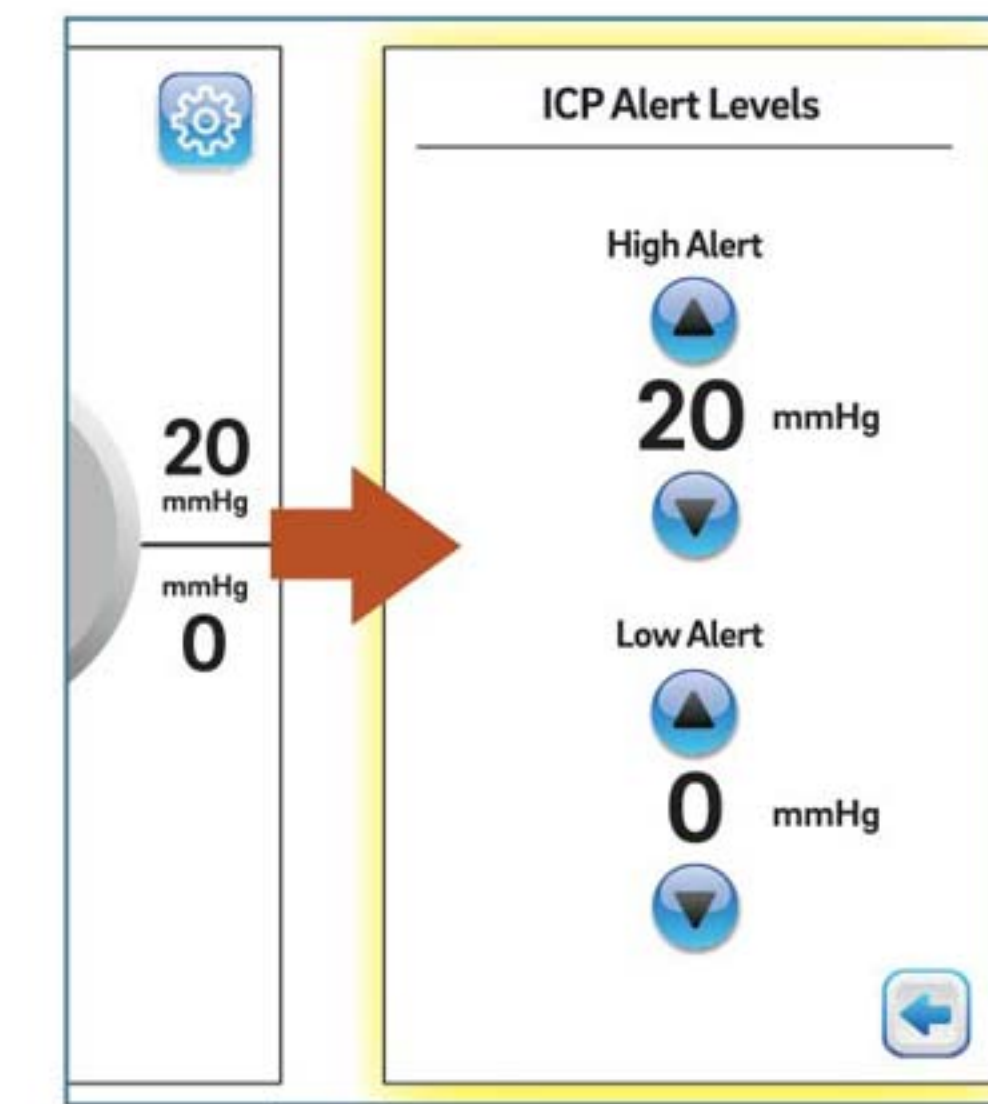
- A. Turn Cassette knob to >0<
- B. Turn Cassette knob to ICP



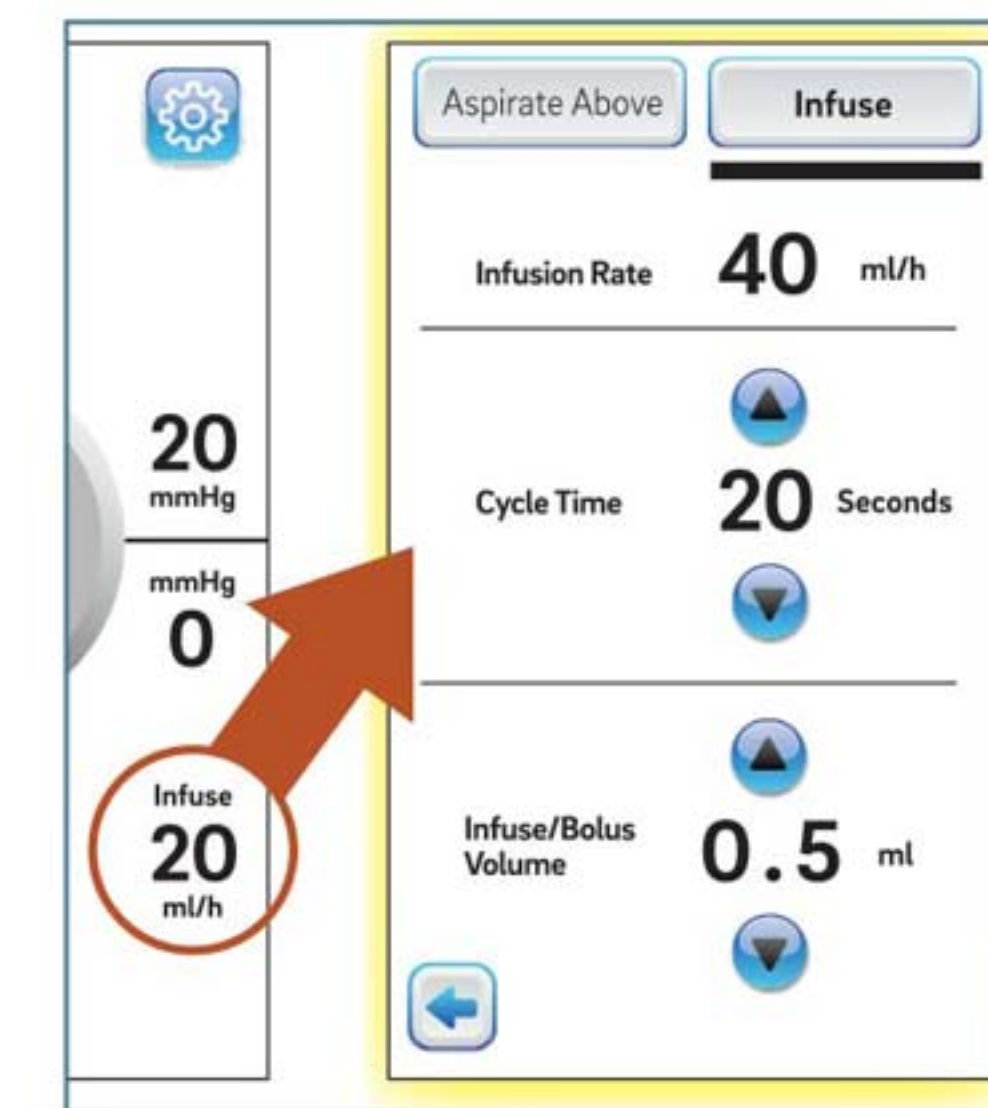
Prime the tubing to flush and remove air.

Make sure all clamps are open

- A. Press settings icon
- B. Press Prime button
- C. Press and hold yellow button until all tubing is clear of bubbles and fluid is observed in the drainage bag
- D. Press the arrow to go back to the home screen



Press on alarm numbers to adjust settings for high and low ICP alarms.



Press on 0 area to open treatment menu and adjust settings.



Visually inspect home screen to ensure that all settings and treatment mode (Aspirate Only or Infuse) selection are correct.

Alerts: Press here to clear

Average ICP: 11.3 mmHg

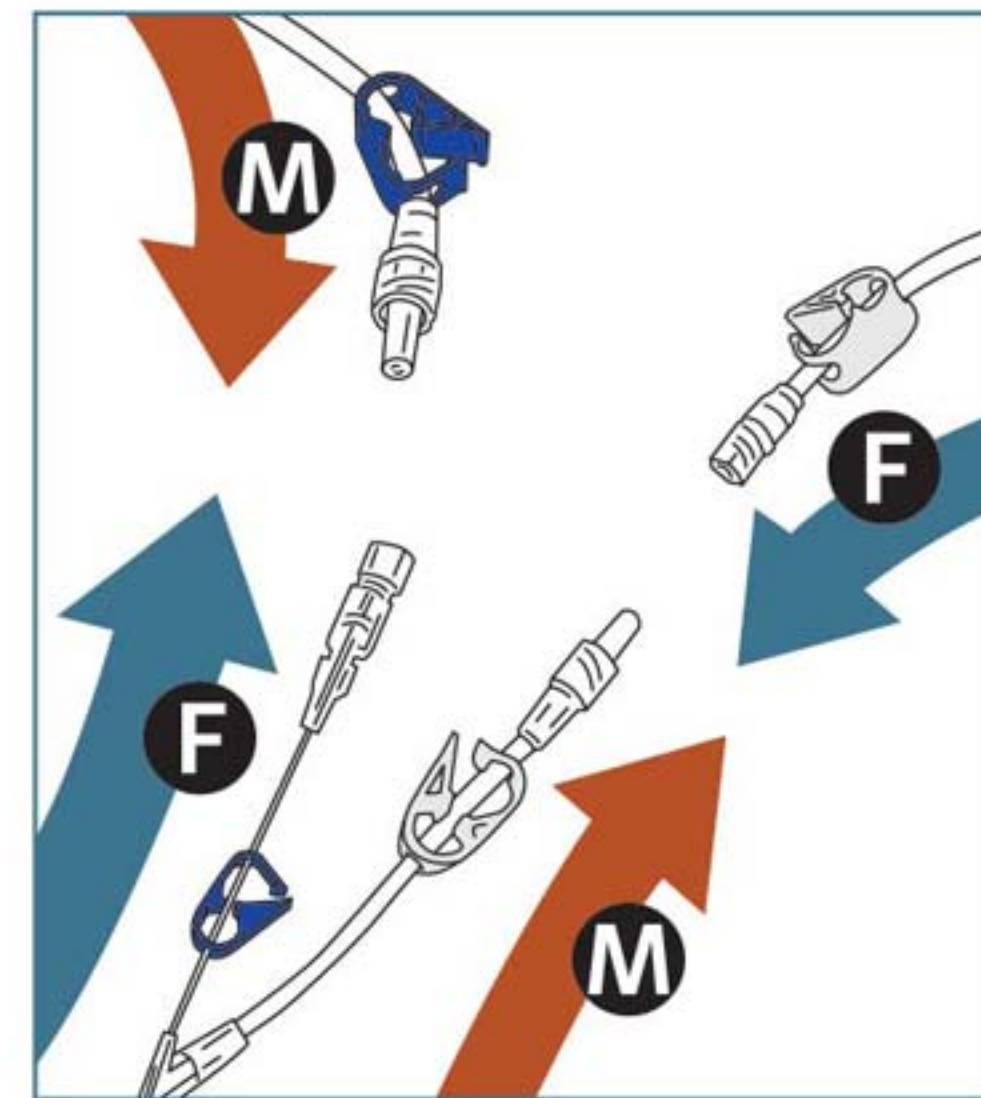
Continuous ICP: 10.2 mmHg

Patient Fluid Flow Indicator: Infuse 20 ml/h

Treatment Time: 4:20:55

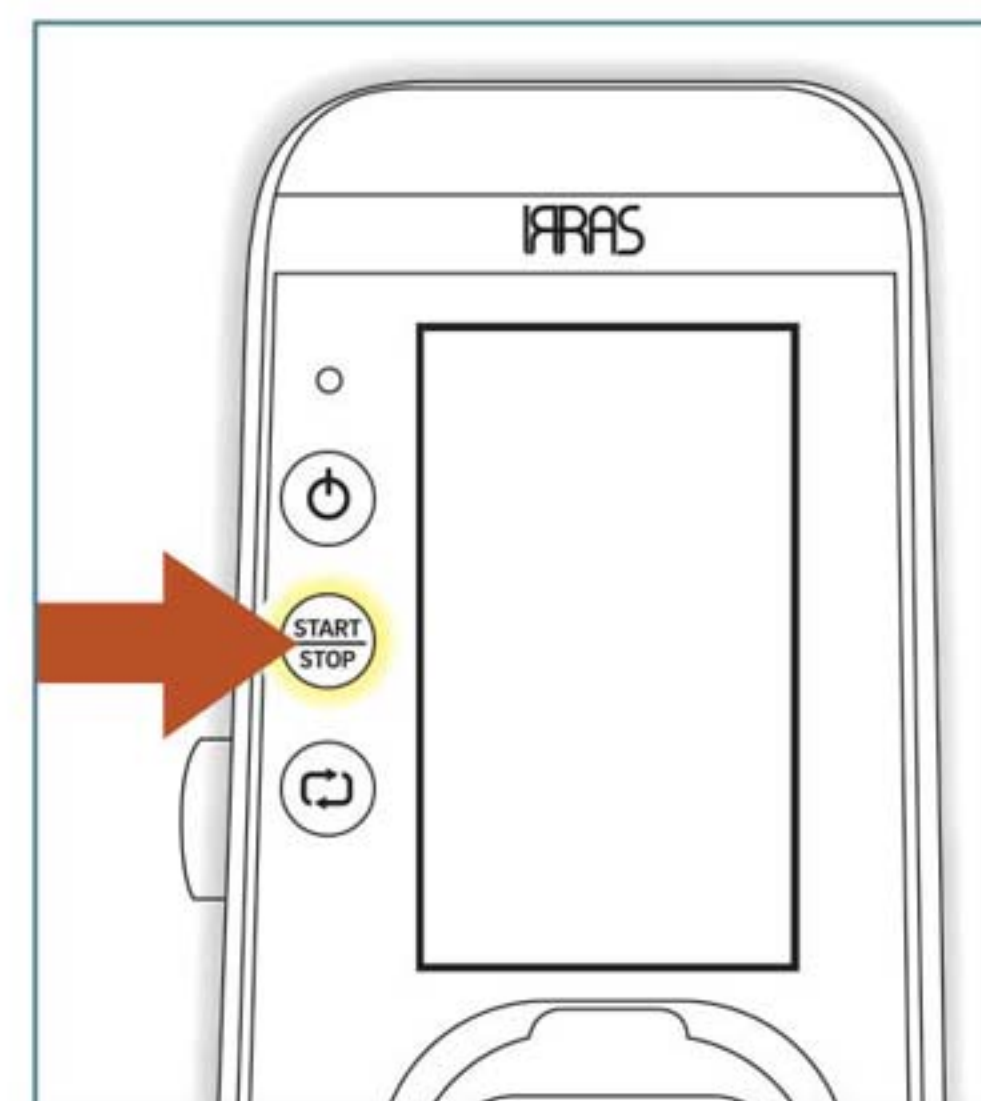
Infusion Total: 26 ml

Treat



Connect Irrigation and Aspiration (Drainage) tubing to Catheter Probe.

1. Male to female
2. Female to male
3. Make sure all clamps are open prior to starting treatment

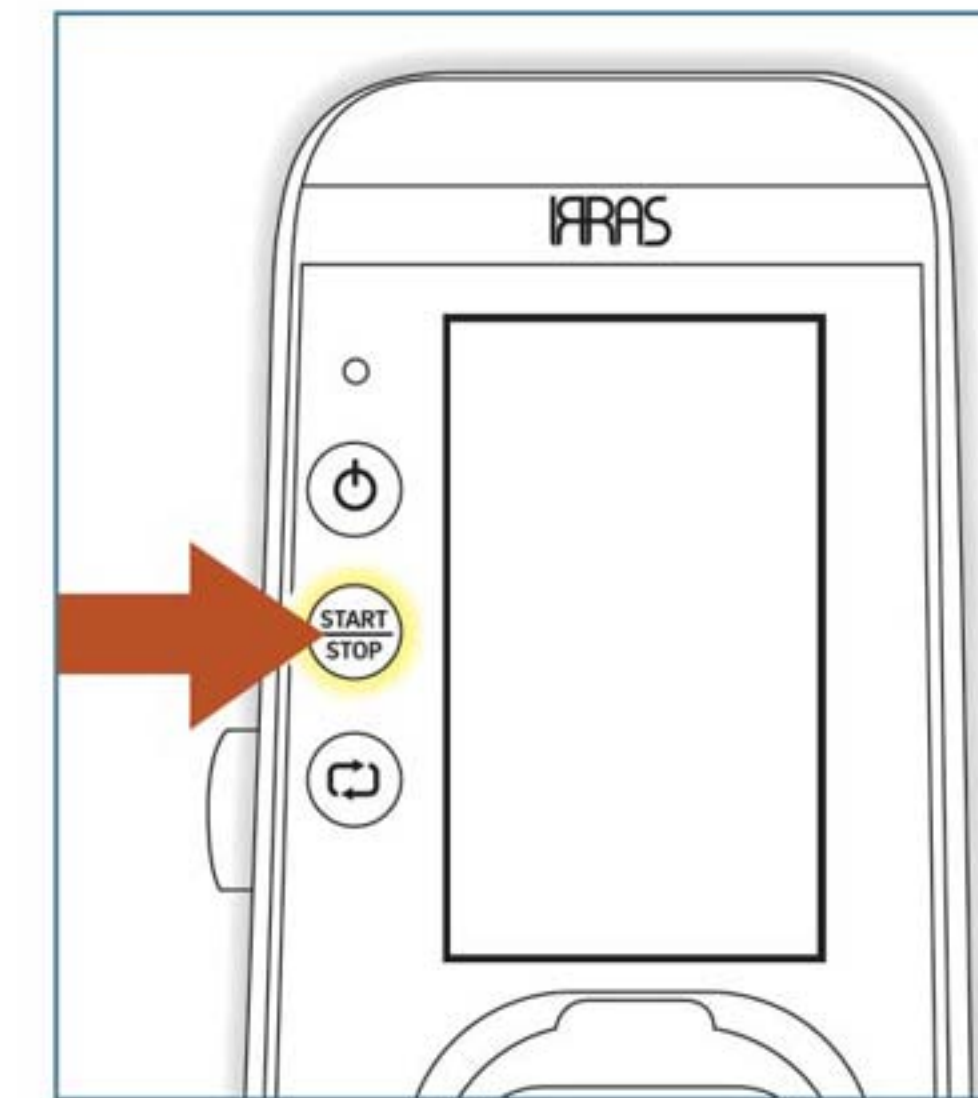


Press start on the console.

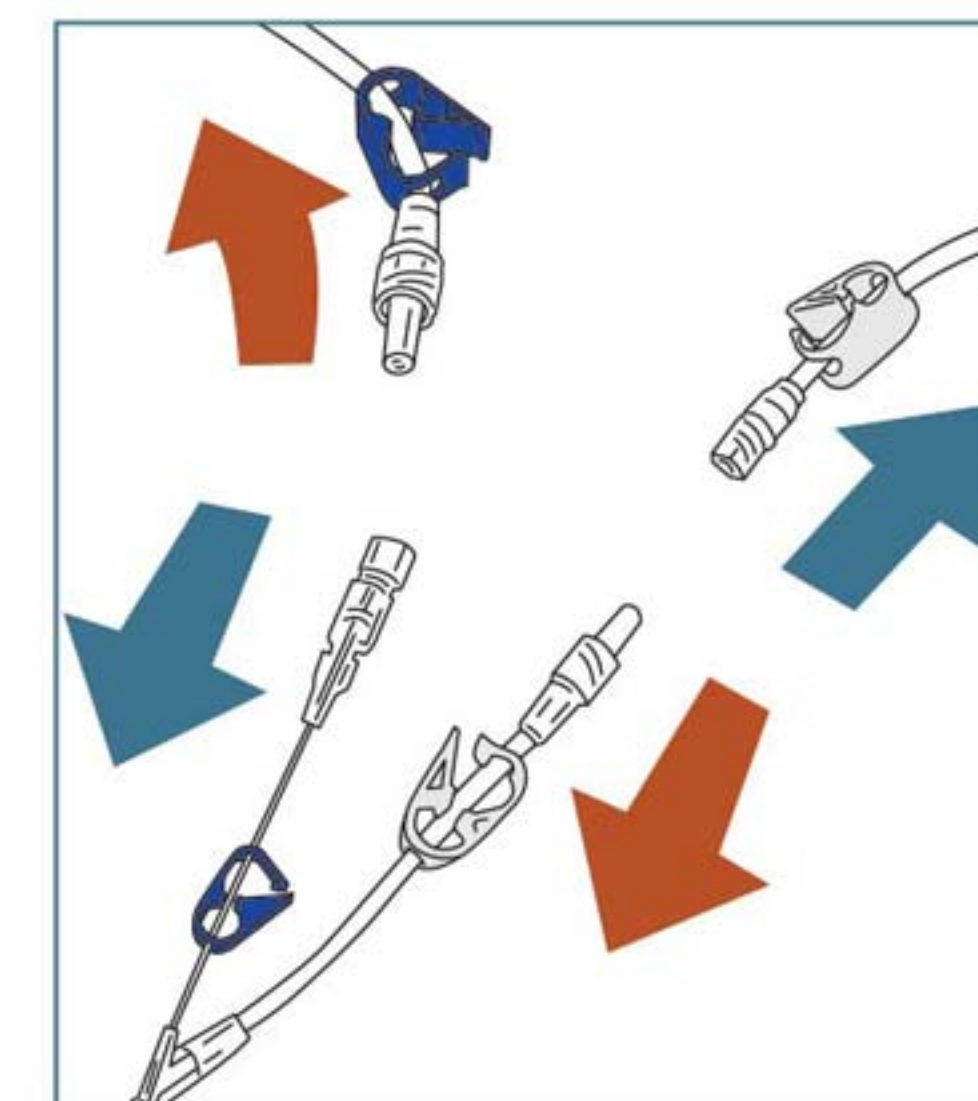


Confirm ICP values and ensure that drainage is occurring.

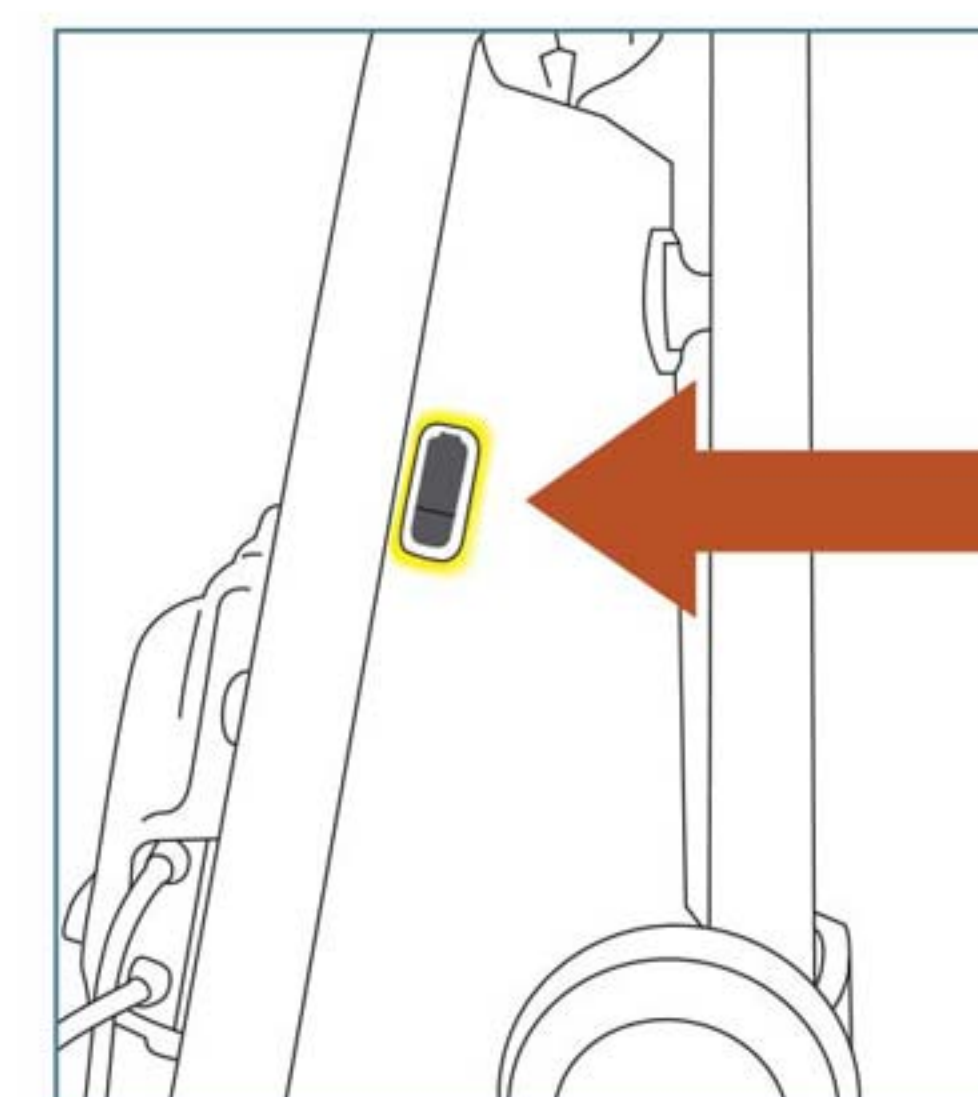
Complete



Press stop.



Close all clamps, disconnect Catheter Probe and dispose of Cassette and drainage bag per hospital protocol.



Transfer treatment record onto USB.

IRRAflow®

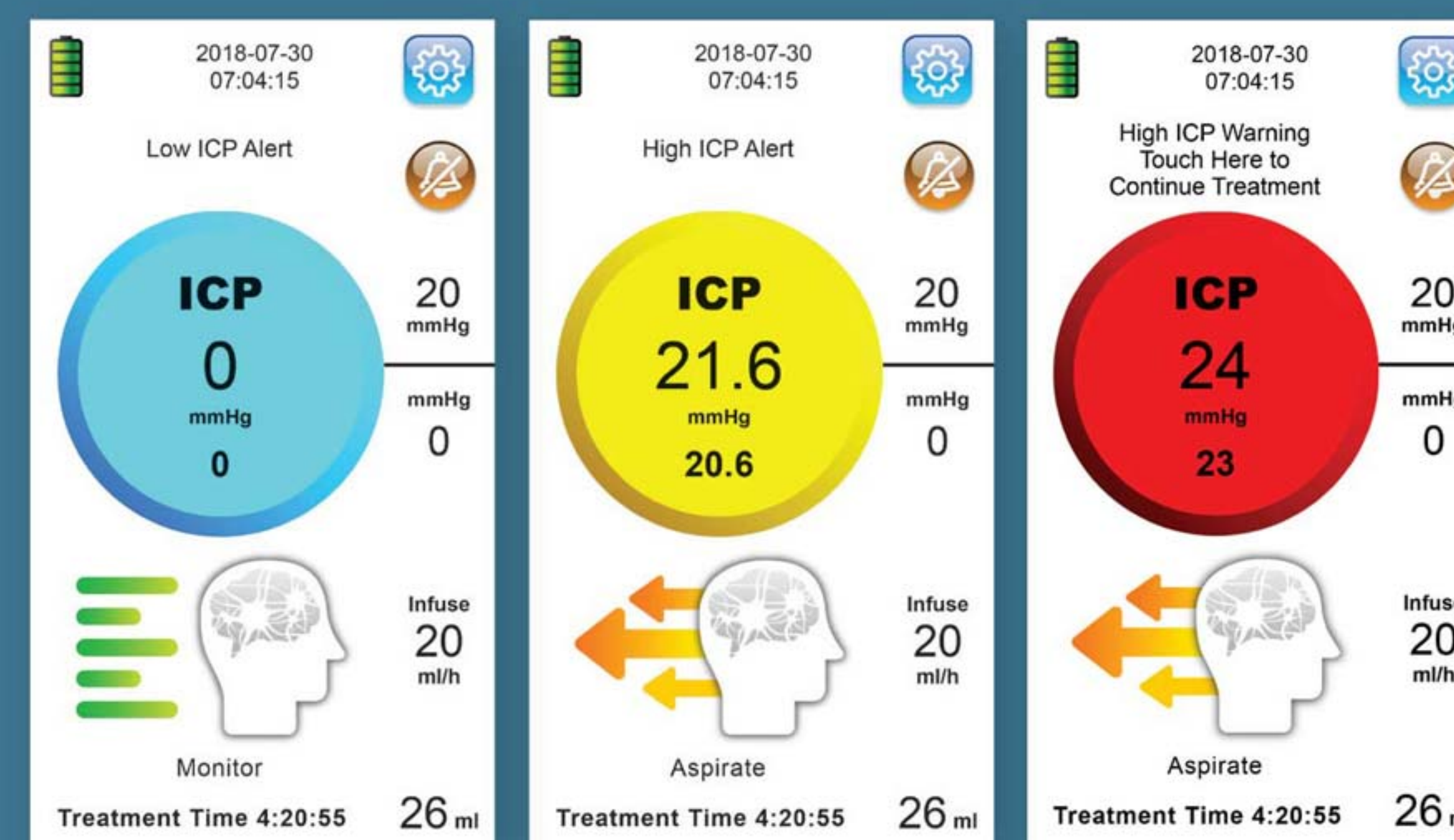
Quick Reference Guide

IRRAS

IRRigation. ASpiration. Transformation.

www.iras.com

IRRAS USA
 11975 El Camino Real, Suite 304
 San Diego, CA 92130
 Tel: (858) 247-7033 | info@iras.com



Average ICP Measurement Irrigate Aspirate

Low ICP Alert High ICP Alert High ICP Warning

This Quick Start Guide is a simplified reference tool and is not a substitute for the user manual. If further assistance is needed please call your IRRAS sales representative.